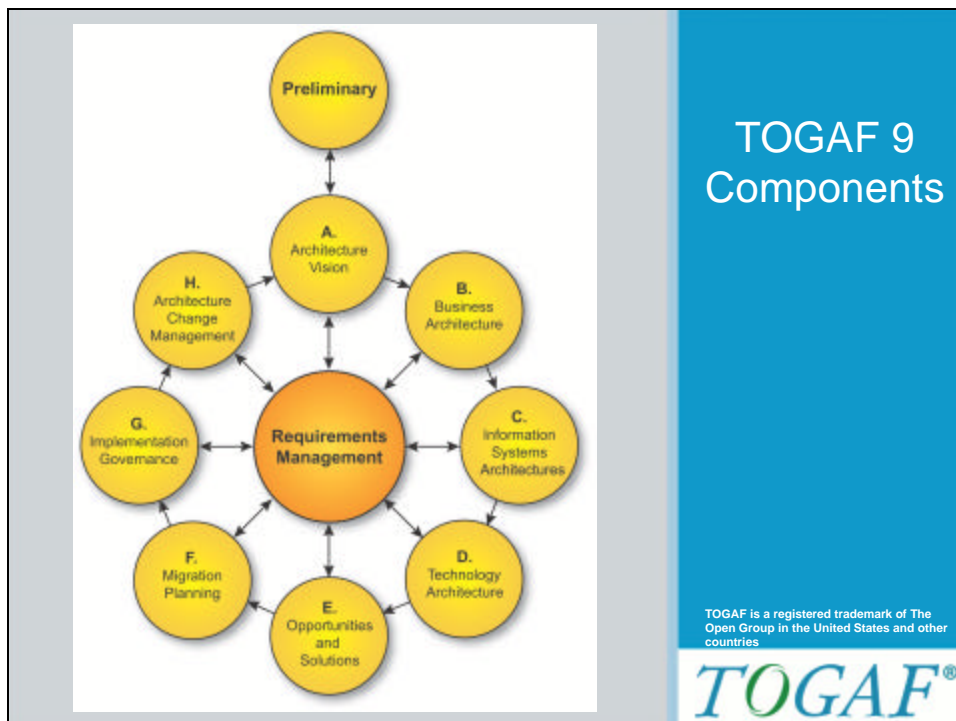


TOGAF Standard Courseware V9 Edition



© 2009-2011 The Open Group, All Rights Reserved




TOGAF Standard Courseware V9 Edition

Module Objectives




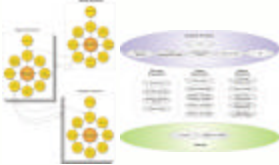
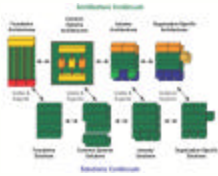

- To highlight and introduce the main components and key concepts of TOGAF 9
 - **The Architecture Development Method (ADM)**
 - **ADM Guidelines and Techniques**
 - **Architecture Content Framework**
 - Deliverables, artifacts, building blocks
 - **The Enterprise Continuum**
 - The Architecture Repository
 - **TOGAF Reference Models**
 - **The Architecture Capability Framework**
 - Establishing an EA Capability
- To understand the TOGAF Document Categorization model

Slide 3 of 27




© 2009-2011 The Open Group, All Rights Reserved

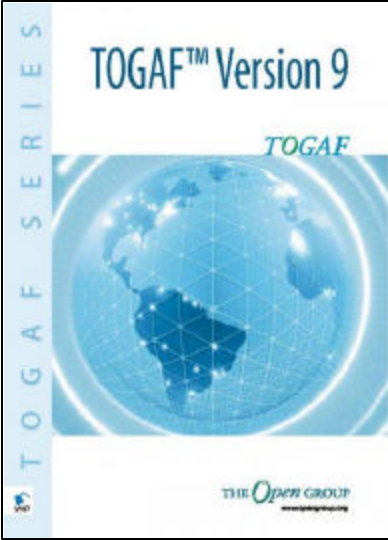
TOGAF 9 Components

 <p>ADM</p>	 <p>Architecture Content Framework</p>	 <p>Reference Models</p>
 <p>ADM Guidelines & Techniques</p>	 <p>Enterprise Continuum</p>	 <p>Architecture Capability Framework</p>

Slide 4 of 27




TOGAF Standard Courseware V9 Edition




Part I - Introduction
Preface, Executive Overview, Core Concepts, Definitions and Release Notes
Part II - Architecture Development Method
Introduction to ADM
ADM Phase Narratives
Part III - ADM Guidelines and Techniques
Guidelines for Adapting the ADM Process
Techniques for Architecture Development
Part IV - Architecture Content Framework
Content Metamodel
Architectural Artifacts
Architecture Deliverables
Building Blocks
Part V - Enterprise Continuum and Tools
Enterprise Continuum
Architecture Partitioning
Architecture Repository
Tools for Architecture Development
Part VI - TOGAF Reference Models
Foundation Architecture: Technical Reference Model
Integrated Information Infrastructure Reference Model
Part VII - Architecture Capability Framework
Architecture Board
Architecture Compliance
Architecture Contracts
Architecture Governance
Architecture Maturity Models
Architecture Skills Framework

Slide 5 of 27




© 2009-2011 The Open Group, All Rights Reserved

The Architecture Development Method



- The core of TOGAF
- A proven way of developing an architecture
- Specifically designed to address business requirements
- An iterative method
- A set of architecture views to ensure that a complex set of requirements are adequately addressed

Slide 6 of 27



TOGAF Standard Courseware V9 Edition

ADM Guidelines and Techniques

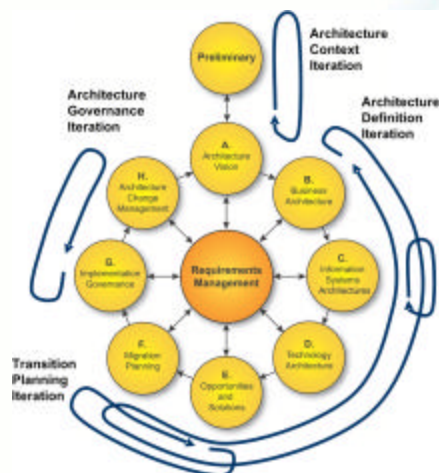
- A set of guidelines and techniques to support the application of the ADM
- The guidelines help to adapt the ADM to deal with different scenarios, including different process styles (e.g. the use of iteration) and also specific requirements (e.g. security).
- The techniques support specific tasks within the ADM (e.g. defining principles, business scenarios, gap analysis, migration planning, risk management, etc).

Slide 7 of 27

TOGAF®

© 2009-2011 The Open Group, All Rights Reserved

Applying Iteration to the ADM



Example Guideline

Slide 8 of 27

TOGAF®

TOGAF Standard Courseware V9 Edition

Applying the ADM at Different Levels

The diagram illustrates the application of the TOGAF Architecture Development Method (ADM) at different levels. It features a central 'Requirements Management' hub connected to five main phases: Preliminary, A (Business Architecture), B (Information Systems Architectures), C (Technology Architectures), and D (Opportunities and Solutions). Each phase is supported by specific tools: Preliminary (Preliminary Phase and Goals), A (Architecture Vision), B (Business Architecture), C (Technology Architectures), and D (Opportunities and Solutions). To the right, three stacked boxes represent 'Strategic Architecture', 'Business Architecture', and 'Technology Architecture', each containing a smaller version of the ADM cycle. Arrows indicate the flow and relationships between these levels.

Example Guideline

TOGAF®

© 2009-2011 The Open Group, All Rights Reserved

Categories of Stakeholder

The diagram categorizes stakeholders into five main groups:

- Corporate Functions:** CxO, Enterprise Security, Program Management Office, QA Standards Groups, Procurement, HR.
- End-user Organization:** Executives, Line Management, Business Domain Experts, Data Owners.
- Project Organization:** Executives, Line Management, Business Process Functional Experts, Product Specialist, Technical Specialist.
- System Operations:** IT Service Management, Service Desk, Application Management, Infrastructure Management, Data/Voice Communications.
- External:** Suppliers, Regulatory Bodies.

Example Technique

TOGAF®

TOGAF Standard Courseware V9 Edition

Architecture Content Framework



Provides a detailed model of architectural work products, including **Deliverables**, **Artifacts** within deliverables, and the **Architecture Building Blocks (ABBs)** that deliverables represent.

- It drives for greater consistency in the outputs of TOGAF
- It provides a comprehensive checklist of architecture outputs
- It promotes better integration of work products
- It provides a detailed open standard for how architectures should be described
- It includes a detailed metamodel

Slide 11 of 27

TOGAF®

© 2009-2011 The Open Group, All Rights Reserved

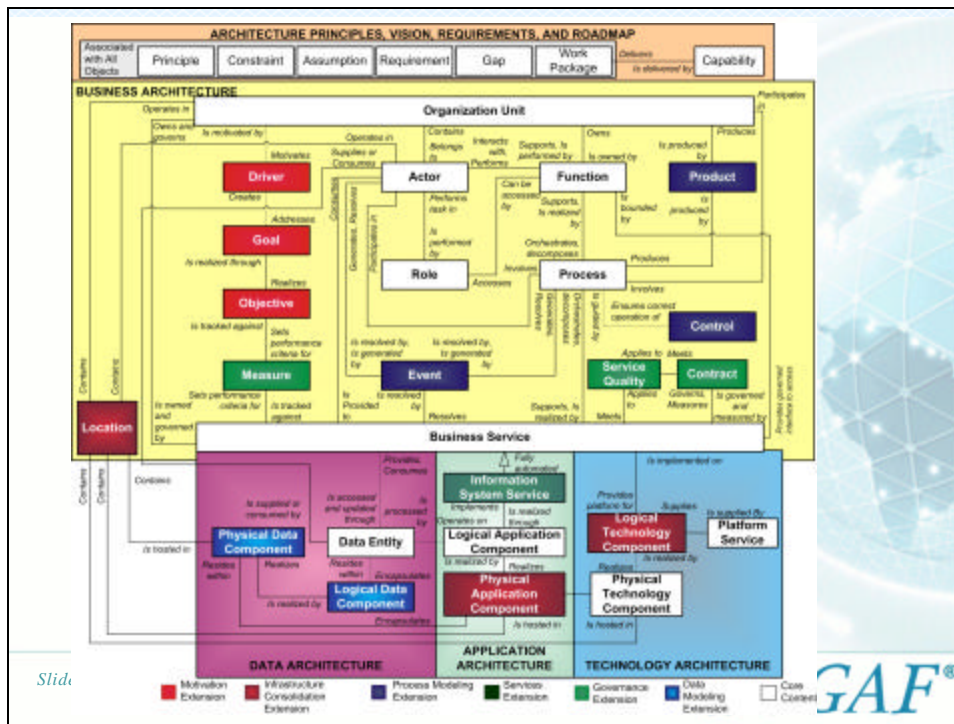
Deliverables, Artifacts and Building Blocks

- **Deliverables**
 - Formal products
 - Contractually specified
 - Outputs from a project
 - A deliverable can contain many artifacts
- **Building blocks**
 - components that can be combined with other building blocks to deliver architectures and solutions
- **Artifacts**
 - fine grained products that describe an architecture from a specific viewpoint
 - For example: use-case specifications, architectural requirements, network diagrams, etc.
 - Classified as:
 - Catalogs (lists of things),
 - matrices (showing relationships between things) or
 - diagrams (pictures of things).
 - Artifacts make up the content of the Architecture Repository

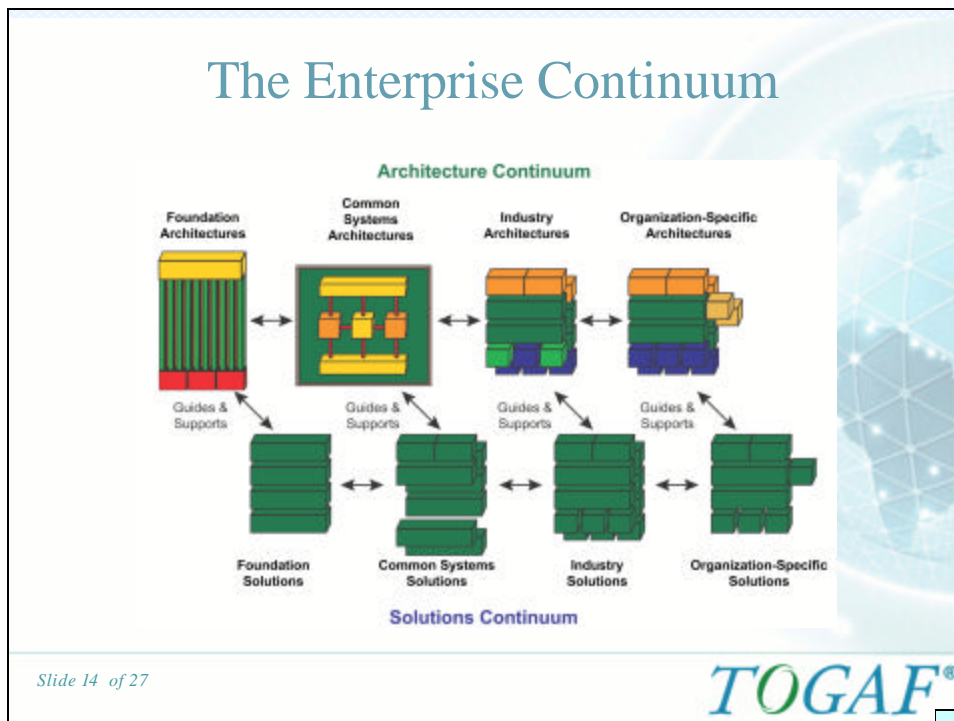
Slide 12 of 27

TOGAF®

TOGAF Standard Courseware V9 Edition

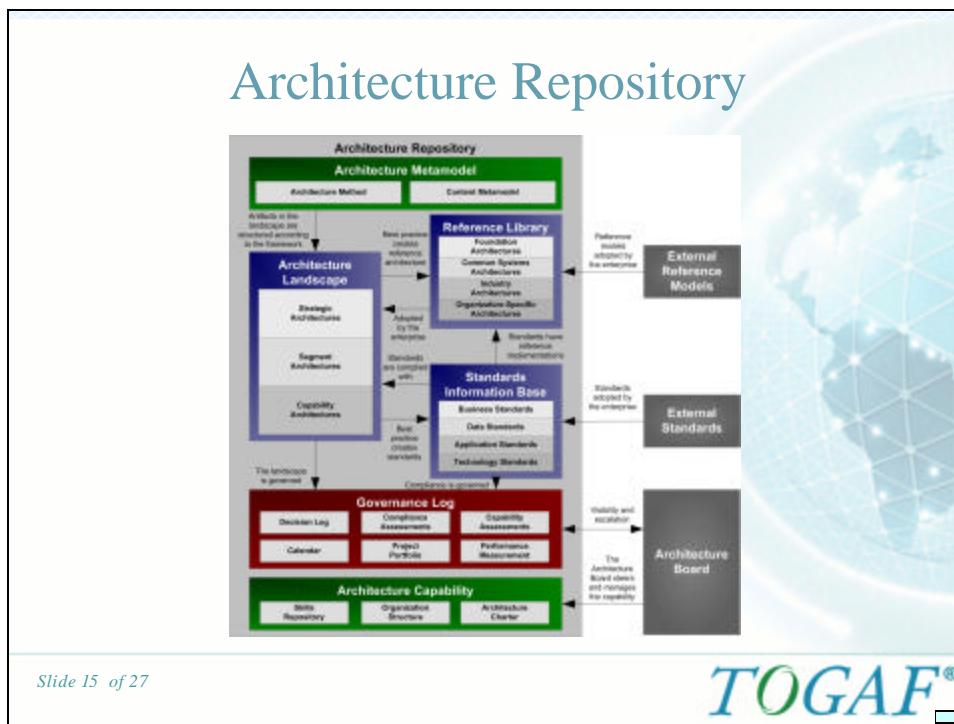


© 2009-2011 The Open Group, All Rights Reserved

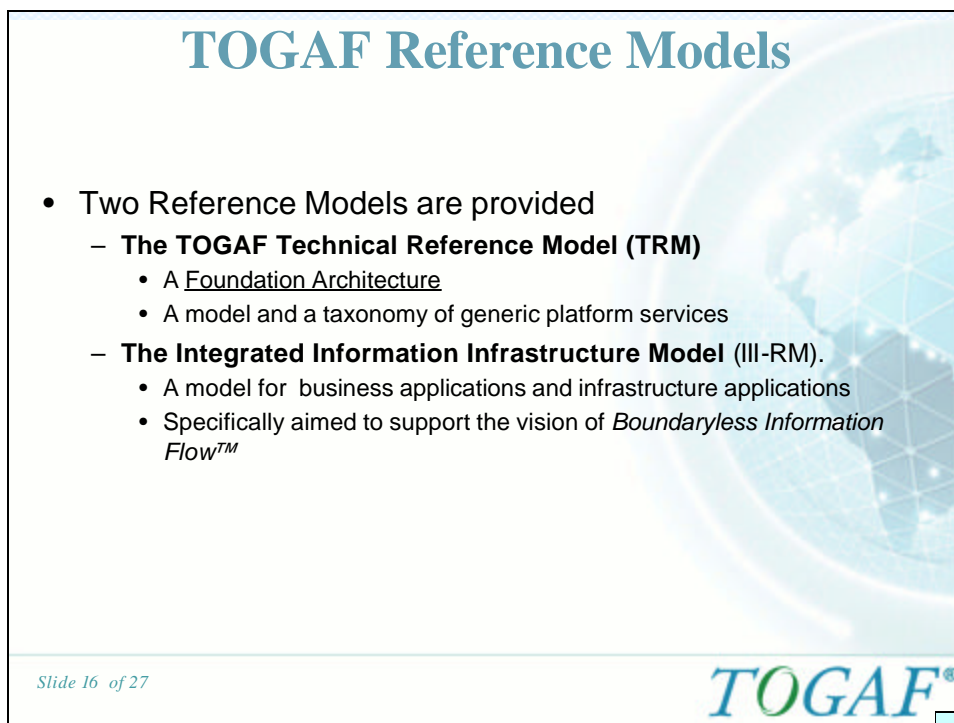


Slide 14 of 27

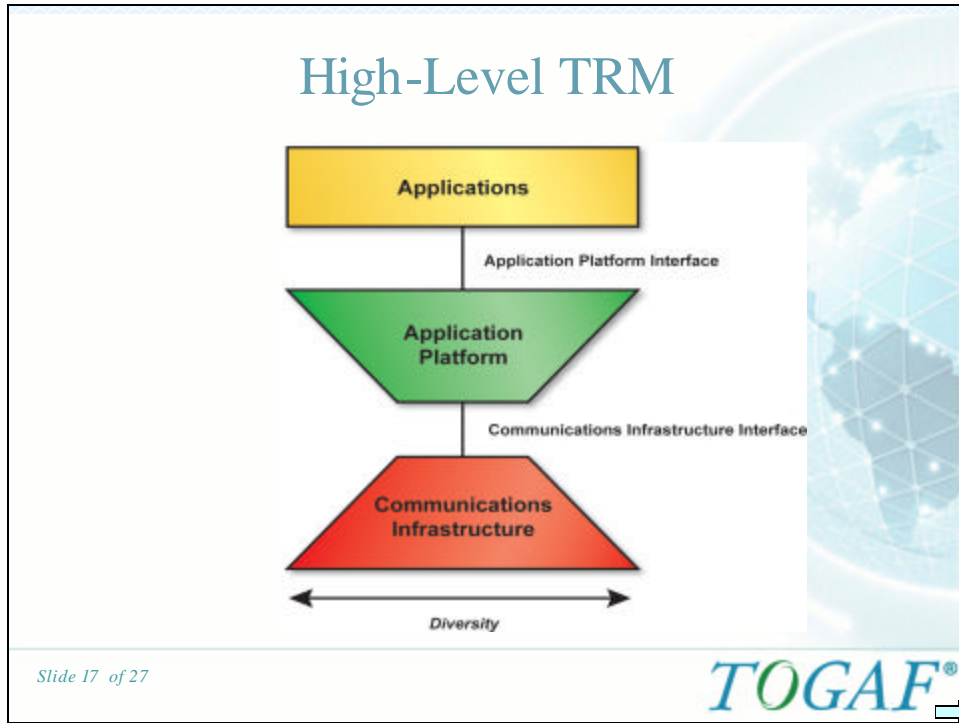
TOGAF Standard Courseware V9 Edition



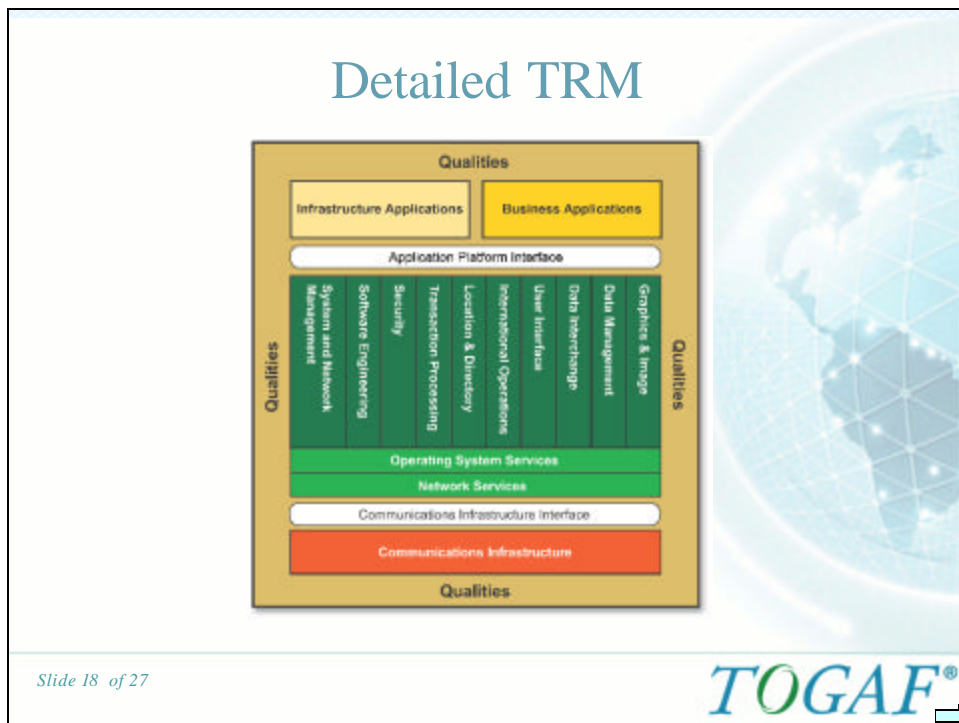
© 2009-2011 The Open Group, All Rights Reserved



TOGAF Standard Courseware V9 Edition



© 2009-2011 The Open Group, All Rights Reserved



TOGAF Standard Courseware V9 Edition

Boundaryless Information Flow™

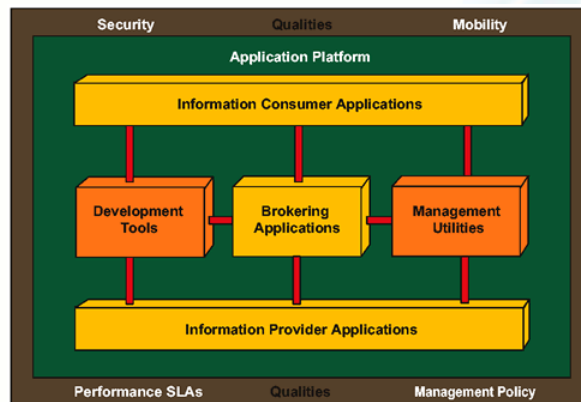
- A trademark of The Open Group
- Access to integrated information to support business process improvements
- An infrastructure that provides Boundaryless Information Flow has open standard components that provide services in a customer's extended enterprise that:
 - Combine multiple sources of information
 - Securely deliver the information whenever and wherever it is needed, in the right context for the people or systems using that information

Slide 19 of 27

TOGAF®

© 2009-2011 The Open Group, All Rights Reserved

The Integrated Information Infrastructure Reference Model (III-RM)

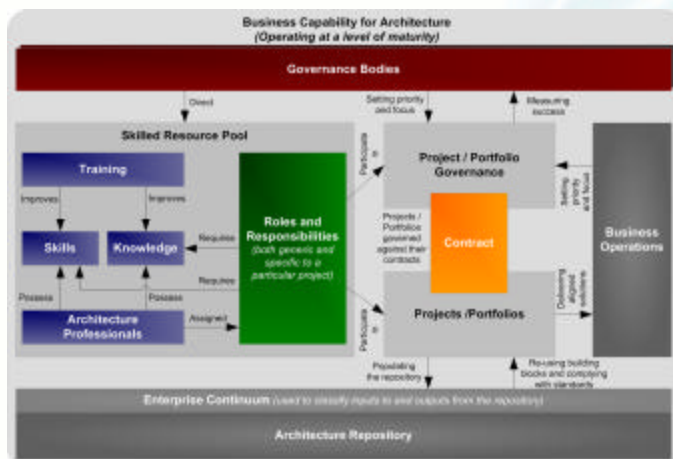


Slide 20 of 27

TOGAF®

TOGAF Standard Courseware V9 Edition

Capability Framework



Slide 21 of 27

21

TOGAF®

© 2009-2011 The Open Group, All Rights Reserved

Establishing the Architecture Capability as an Operational Entity

- The Architecture Capability Framework provides guidance on establishing an operational enterprise architecture practice
- It recommends they include capabilities such as:
 - Financial Management
 - Performance Management
 - Service Management
 - Risk Management
 - Resource Management
 - Communications and Stakeholder Management
 - Quality Management
 - Supplier Management
 - Configuration Management
 - Environment Management

Slide 22 of 27

TOGAF®

TOGAF Standard Courseware V9 Edition

TOGAF Document Categorization Model

- A model to structure release management of the TOGAF specification itself
- Content of the TOGAF specification is categorized
 - **TOGAF Core:** *fundamental concepts that form the essence of TOGAF*
 - **TOGAF Mandated:** *normative parts of TOGAF. Elements considered central to its usage, without which the framework would not be TOGAF*
 - **TOGAF Recommended:** *a pool of resources referenced in TOGAF as ways in which Core and Mandated processes can be accomplished*
 - **TOGAF Supporting:** *additional resources not referenced in the other three categories*

Slide 23 of 27

TOGAF®

© 2009-2011 The Open Group, All Rights Reserved

Summary

- Architecture Development Method (ADM)
 - An iterative sequence of steps to develop an enterprise-wide architecture
- ADM Guidelines and Techniques
 - Guidelines and techniques to support the application of the ADM
- Architecture Content Framework
 - A detailed model of architectural work products, including deliverables, artifacts within deliverables, and the Architecture Building Blocks (ABBs) that deliverables represent.

Slide 24 of 27

TOGAF®

TOGAF Standard Courseware V9 Edition

Summary

- The Enterprise Continuum
 - A model for structuring a virtual repository and methods for classifying architecture and solution artifacts.
 - Supported by the Architecture Repository, a model for a physical repository
- TOGAF Reference Models:
 - The TOGAF **Technical Reference Model** (TRM)
 - The **Integrated Information Infrastructure Model** (III-RM).
- The Architecture Capability Framework
 - A structured definition of the organizations, skills, roles and responsibilities to establish and operate an Enterprise Architecture.

Slide 25 of 27

TOGAF®

© 2009-2011 The Open Group, All Rights Reserved

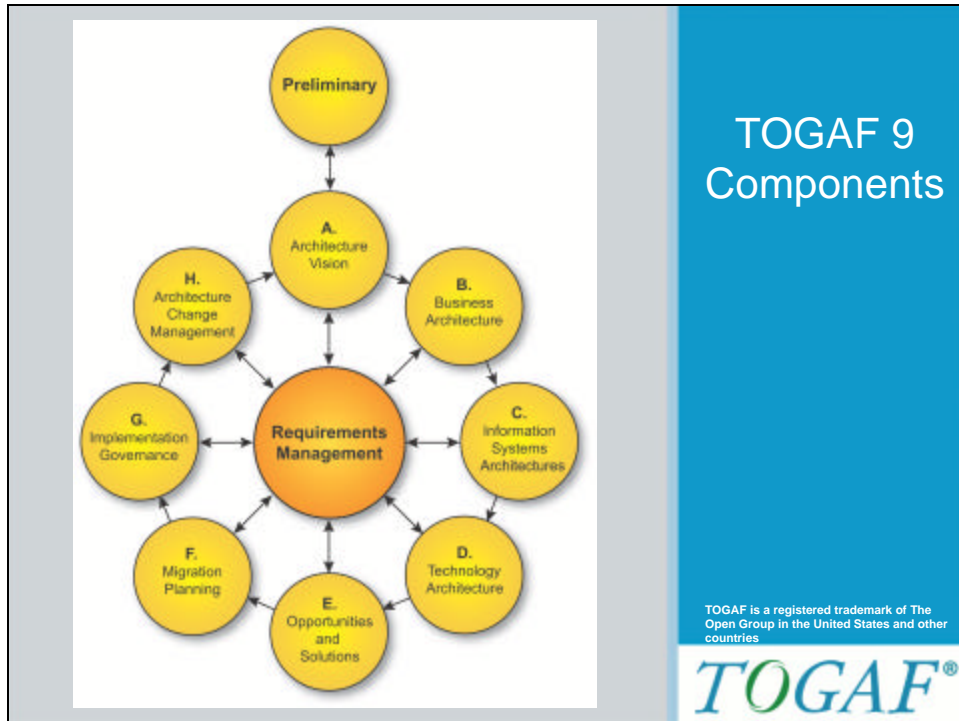
Test Yourself Question

- Q: Which of the following is not considered one of the main parts of TOGAF?
- A. Architecture Development Method
 - B. Enterprise Continuum
 - C. TOGAF Reference Models
 - D. TOGAF Resource Base

Slide 26 of 27

TOGAF®

TOGAF Standard Courseware V9 Edition



© 2009-2011 The Open Group, All Rights Reserved