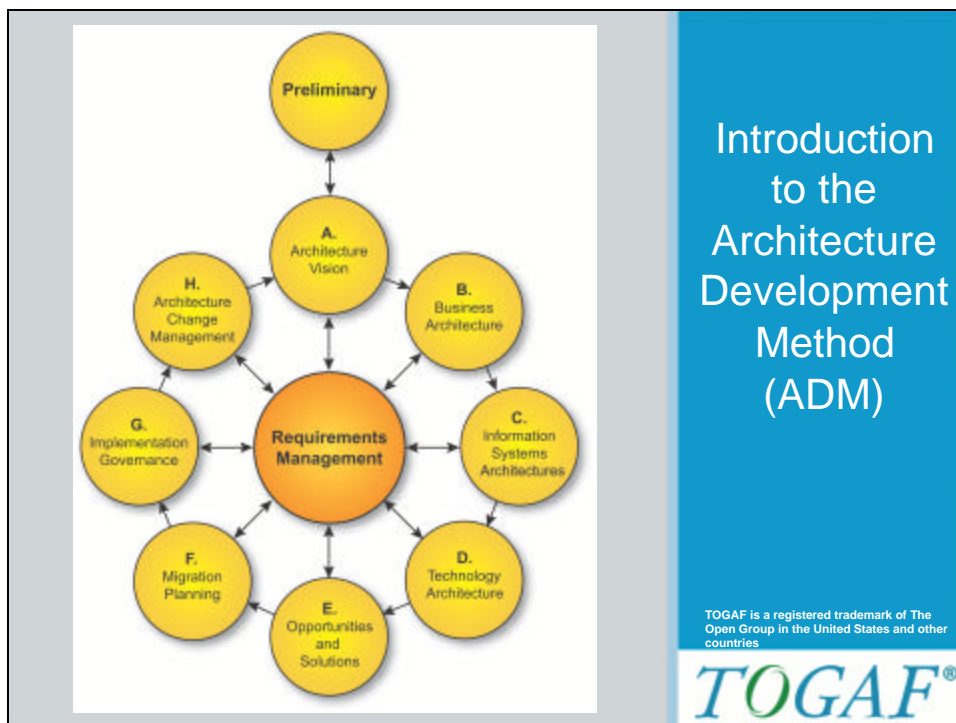


# TOGAF Standard Courseware V9 Edition



© 2009-2011 The Open Group, All Rights Reserved




## TOGAF Standard Courseware V9 Edition

### Module Objectives

The objectives of this module are to describe:

- The TOGAF ADM
- Its relationship to other parts of TOGAF
- The phases of the ADM
- How and why to adapt the ADM
- How to scope an architecture activity
- The need for an integration framework

*Slide 3 of 19*




© 2009-2011 The Open Group, All Rights Reserved

### What is the TOGAF ADM?

- The ADM forms the core of TOGAF
- The result of contributions from many architecture practitioners
- It is specifically designed to address enterprise's business and IT needs by providing:
  - A set of architecture views (business, data, application, technology)
  - Guidelines on tools for architecture development
  - A set of recommended deliverables
  - Links to practical case studies
  - A method for managing requirements

*Slide 4 of 19*



## TOGAF Standard Courseware V9 Edition

### Architecture Development Method – Process

- The ADM is an iterative process:
  - Over the whole process
  - Between phases
  - Within phases
- For each iteration, re-consider:
  - Scope
  - Detail
  - Schedules, milestones

Slide 5 of 19

© 2009-2011 The Open Group, All Rights Reserved

### Architecture Development Method – Process

- Consider assets from:
  - Previous iterations
  - Marketplace, according to availability, competence, and value:
    - Other frameworks
    - Systems models
    - Vertical Industry models

Slide 6 of 19

TOGAF Standard Courseware V9 Edition

## Relationship to other Parts of TOGAF

The ADM forms the **core** of TOGAF

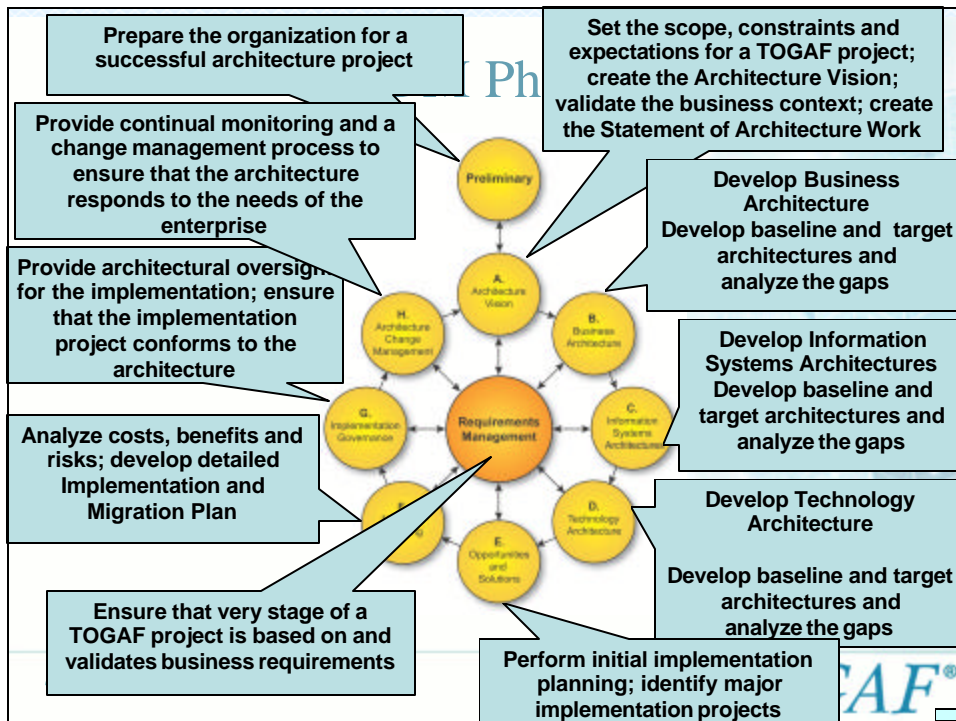
It is supported by the other main parts of TOGAF:

- **ADM Guidelines and Techniques**
  - Set of guidelines, templates, checklists
- **Architecture Content Framework**
- **The Enterprise Continuum**
  - Framework and context for architecture assets including descriptions, models and patterns
- **TOGAF Reference Models**
- **The Architecture Capability Framework**

Slide 7 of 19

TOGAF®

© 2009-2011 The Open Group, All Rights Reserved



## TOGAF Standard Courseware V9 Edition

### ADM Phase Steps Example

Slide 9 of 19

**TOGAF**<sup>®</sup>

© 2009-2011 The Open Group, All Rights Reserved

### ADM Inputs and Outputs

- TOGAF defines a number of input and output deliverables for each phase
  - These are suggestions and need not be followed exactly
  - Output of an early phase may be modified in a later phase
  - Version numbers are used to manage the output
  - A convention is used to illustrate the evolution of deliverables
    - 0.1 – a high level outline deliverable
    - 1.0 – a formally reviewed detailed deliverable

Slide 10 of 19

**TOGAF**<sup>®</sup>



## TOGAF Standard Courseware V9 Edition

### Adapting the ADM

- Generic methodology intended for variable:
  - Geographies
  - Vertical sectors
  - Industry types
- Usable with deliverables of other frameworks such as Zachman, DODAF, ...
- It is usual to modify or extend the ADM to suit specific needs

Slide 11 of 19

TOGAF®

© 2009-2011 The Open Group, All Rights Reserved

### Governing the ADM

- The ADM, whether adapted or used as is, is a key process to be managed and governed
- The Architecture Board should be satisfied that the method is being applied correctly
- The management of all architectural artifacts, governance and related process should be supported by a controlled environment such as a repository

Slide 12 of 19



TOGAF®

## TOGAF Standard Courseware V9 Edition

### Governance Repository

- Reference Data
- Process Status
- Audit Information

*Slide 13 of 19*

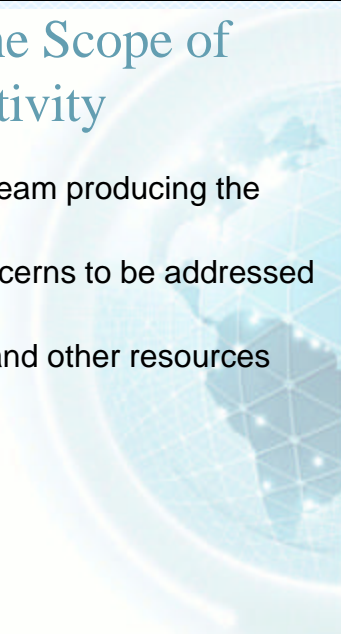



© 2009-2011 The Open Group, All Rights Reserved

### Reasons to constrain the Scope of Architectural Activity

- The organizational authority of the team producing the architecture
- The objectives and stakeholder concerns to be addressed within the architecture
- The availability of people, finance, and other resources

*Slide 14 of 19*



## TOGAF Standard Courseware V9 Edition

### Scoping the Architecture Activity

- There are four dimensions in which scope may be limited:
  - Enterprise scope or focus
  - Architecture domains
  - Vertical scope (level of detail)
  - Time periods (Project Schedule)

Slide 15 of 19

TOGAF®

© 2009-2011 The Open Group, All Rights Reserved

### Architecture Integration

- There is a need to provide an integration framework that sits above individual architectures:
  - To allow the architect to understand how components fit into the framework
  - To derive the architectural models that focus on enterprise-level capabilities
  - To define the conformance standards that enable the integration of components for maximum leverage and re-use
- An “Enterprise framework” – a Content Framework, or a Meta-architecture framework

Slide 16 of 19

TOGAF®



## TOGAF Standard Courseware V9 Edition

### Summary

- The ADM is a comprehensive, general method
- It recommends a sequence for various phases and steps involved in developing an architecture
- It is an iterative method
- It draws on the other parts of TOGAF for assets and processes
- It can be used with other deliverables from other frameworks

Slide 17 of 19

TOGAF®

© 2009-2011 The Open Group, All Rights Reserved

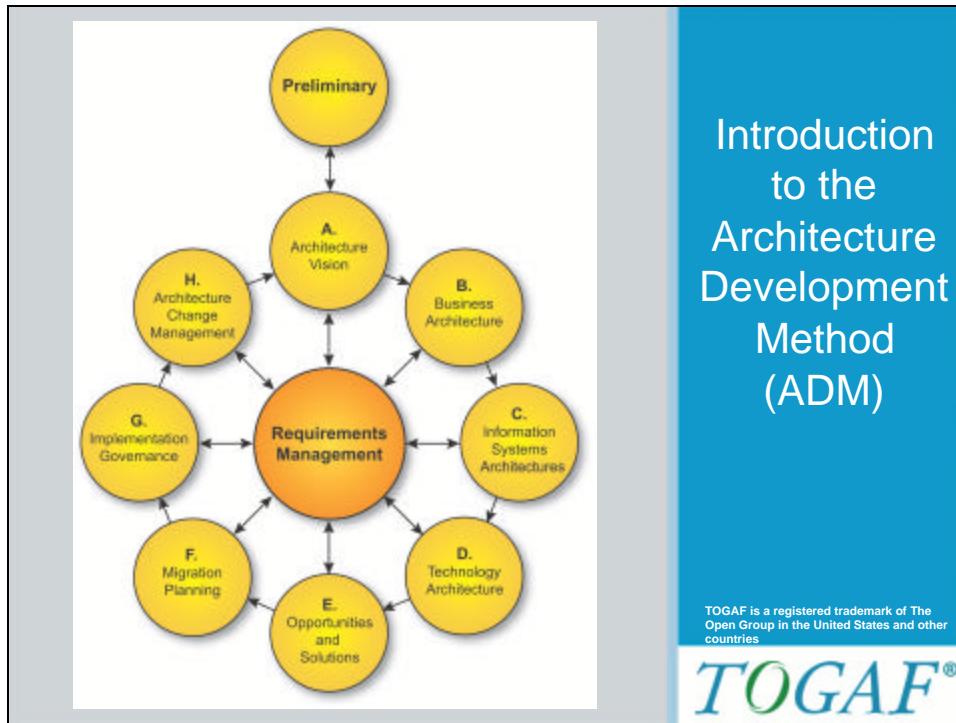
### Test Yourself Question

- Q. The following statements describe the phases of the ADM, *except* ?
- A. They are cyclical.
  - B. They are iterative.
  - C. Each phase refines the scope.
  - D. Each phase is mandatory.
  - E. The phases cycle through a range of architecture views.

Slide 18 of 19

TOGAF®

# TOGAF Standard Courseware V9 Edition



© 2009-2011 The Open Group, All Rights Reserved